



**MAGNA.** Glaskeramik  
Straße der Einheit 18  
D - 06179 Teutschenthal  
T. +49 346 01 - 397 00

[info@magna-glaskeramik.com](mailto:info@magna-glaskeramik.com)  
[www.magna-glaskeramik.com](http://www.magna-glaskeramik.com)

Foto: Marcus Bleyl



**MAGNA.**  
GLASKERAMIK



**Our Glaskeramik is sustainable –  
thanks to 100% recycled glass.  
Handmade in Germany.**



**x 8**

**= 1 m<sup>2</sup> Glaskeramik**





## OUR PRODUCTION PROCESS

Magna Glaskeramik is a material of crystalline structure, translucent and with lighting capabilities. Its patinated, natural surface has an extraordinary textured finish.

Magna Glaskeramiks **production process** is unique and displays a fascinating combination of high tech manufacturing and sustainable material sourcing. Glaskeramik is made 100% from the waste in making German glass production. In this way the industrial waste of glass bottle and solar glass production is prepared into particular **shards and granulate** form. These thousands of

shards are sorted and then sintered under a patented computer-controlled programme.

Thereby the unusual character of the glass comes out of it becoming from part crystal, **without force of pressure or additives**, only using temperature and time controls.

Finally an extremely precise **cooling programme** reduces the tension in the material to a minimum such that it is annealed and not toughened, a character more like stone than safety glass.



## OUR COLOURS

All available colours in both polished and patinated surface.



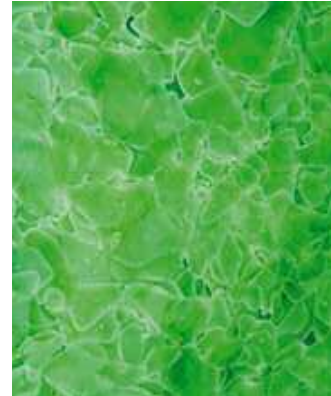
Polar White



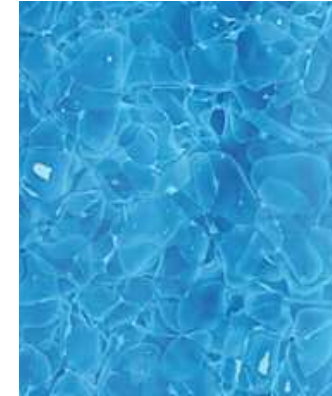
Ice Nugget



Jade



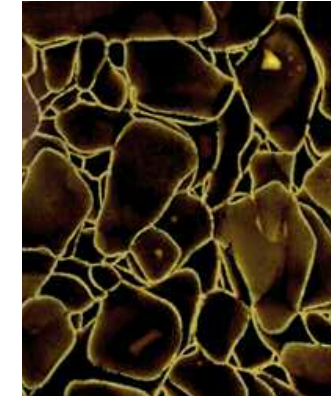
Green



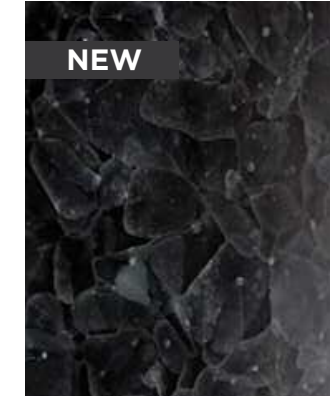
Ocean Blue



Light Grey



Champagne Brown



Black

All colours are in stock sheets 2700x1200mm polished and 2780x1250mm patinated finish in thickness of 16mm to 23mm. Finished work ac-

cording to submissions. NEW: Larger sheets available now in 3500x1500mm patinated and 3450mm x 1450mm polished, even in 30mm thickness.





## OUR OBJECTS

Glaskeramik – a fascinating material for interior architecture which offers a wide spectrum of application possibilities; in bathrooms, kitchens, shops and expositions, vanities, sinks, shower screens, kitchen worktops and splashbacks, floor slabs, window reveals, shelving, receptions, desks and column cladding, sun screens and office dividers.

Aside from this Glaskeramik is an exciting solution for the furniture and design arenas. The material (double polished) can be used as a unique room divider, interior wall cladding and even as large format external façade. Here the play of light, half reflection and translucency of the surface is especially exciting and new. Also the material combines and contrasts well with other materials, especially glass and stone.





Arena Leipzig, Foto: Marcus Bleyl





Infobox St. Sebalduskirche, Nürnberg  
Foto: Marcus Bleyl



Naturalia Shop, Paris  
Architect: Kengo Kuma Assoc.





Cannon Place Station, London



GLA Chukyo Hall, Prayer Hall, Nagoya, Japan  
Foto: Shigeo Ogawa



Talbot Gateway, Blackpool



Mixed use building Trondheim, Norway  
Foto: Henrik Larsen